



BULLY DOG

#1 IN PERFORMANCE

USER MANUAL

Caterpillar Update Agent



PC Version update software program.

The Caterpillar Update Agent is an online software program created to update the Caterpillar Power Pup 46520.





TABLE OF CONTENTS

TABLE OF CONTENTS	PG. 1
INTRODUCTION	PG. 2
SYSTEM REQUIREMENTS	PG. 2
INSTALLATION	PGS. 3-6
CAT Update Agent Location and Download	pg. 3
Using the Cat Update Agent	pg. 4-5
How to Obtain Device Drivers	pg. 6



INTRODUCTION

This free software is used for the purpose of obtaining Caterpillar vehicle tuning files from the Bully Dog Database and to update the Power Pup software versions to the latest available. This program is the most automated and comprehensive update software available in the automotive aftermarket. This instruction set outlines the installation and use of the Caterpillar Update Agent. It also describes how to obtain device drivers for the Caterpillar Downloader.

Automatic Update Feature: It is important to note that the CAT Update Agent keeps itself up to date on the latest programs available from Bully Dog. As long as your PC is connected to the internet the CAT Update Agent will regularly check our server for updates. Further, the CAT Update Agent will notify you when a new update is available so you are never left guessing.

SYSTEM REQUIREMENTS

Hardware & Software requirements for the Update Agent include:

Windows™ XP, 2000, NT or Vista

Microsoft Windows Installer 3.1

Microsoft .Net framework version 3.5

Microsoft Visual Basic Super Pack

64 MB minimum of RAM

200 MB free space on hard drive recommended

56 K minimum internet connection, DSL or cable connection strongly recommended

800 MHz or higher processor

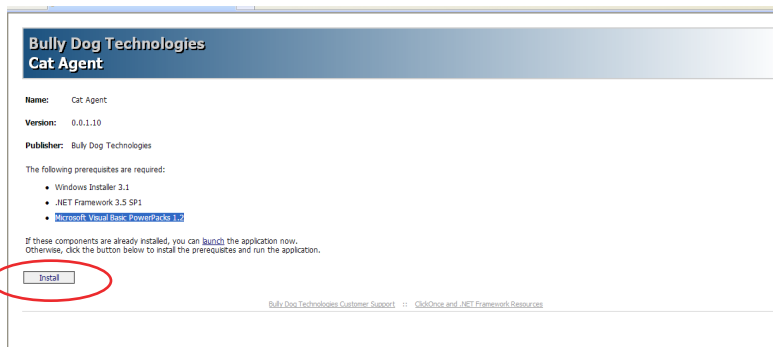
USB cable required to perform updates

CAT UPDATE AGENT INSTALLATION

The Caterpillar Update Agent can be acquired one of two ways; via the CAT Update Agent CD or via the Bully Dog Big Rig website: www.bullydogbigrig.com. The difference in installation is that installing via the CD may be a little quicker due to the fact that the files do not have to be downloaded from off of the web before the CAT Update Agent application can be installed on a PC. Visually the website and cd interface will also differ from one another. This installation covers installation via the website. If using the CD use the installation instructions included on the CD interface.

Installation via website:

1. To begin installation of the Update Agent using the web, go to www.bullydogbigrig.com. Once on the Big Rig website click on the link for tech support and then select the Update Agent tab."
2. A page will then appear that has an Update Agent option available for the Cummins and the Detroit engines and one for the Caterpillar. Click on the link labeled "Download CAT Agent," highlighted in red below, and then the following screen will appear.



3. Click on the Install tab circled in the diagram above. Before the Cat Agent can be installed the installer seen above will check the PC for the three programs listed on the screen. If any of the programs aren't installed then it will automatically begin installation of those programs. The programs necessary to support the CAT Update Agent are Microsoft programs and therefore have their own End User Licence Agreement. These programs are not associated with Bully Dog Technologies.

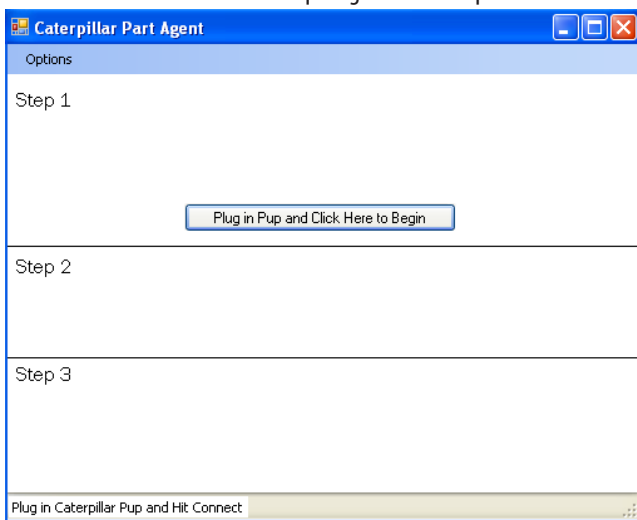
INSTALLATION OF THE MICROSOFT PROGRAMS AND THE CAT UPDATE AGENT CAN TAKE AS LONG AS 35 MINUTES.

USING THE CAT UPDATE AGENT

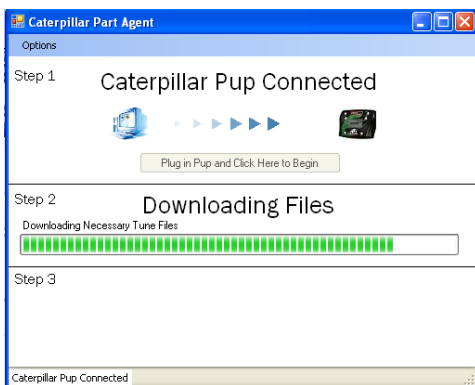
Once the Cat Update Agent Installation is complete The Cat Update Agent will automatically start up. Any time the Cat Update Agent needs to be activated after the initial start up it can be found in the all programs menu under Bully Dog Technologies.

The Caterpillar Update Agent has three easy steps:

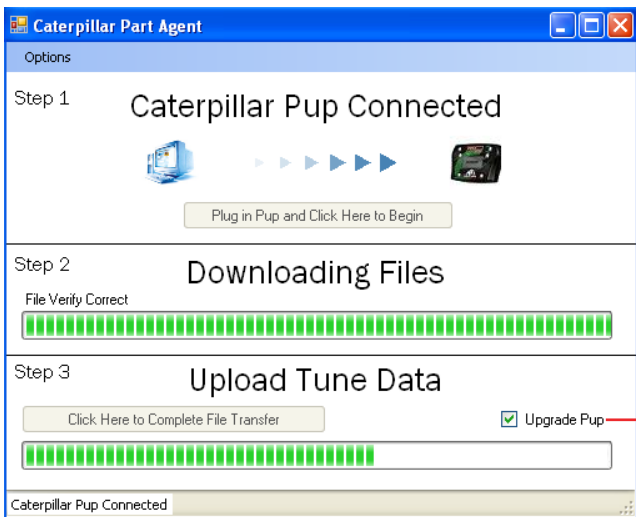
1. Open the Caterpillar Update Agent and plug in the Caterpillar Power Pup via USB. If when plugging in Power Pup the PC recognizes the Pup as new hardware proceed to the next section before continuing in this section for instructions on acquiring the Power Pup windows drivers.



2. Press the button on the CAT Update Agent that says "Plug in Pup and Click Here to Begin." Once that button is clicked the Update Agent will begin downloading the vehicle file info off of the Pup and sending it to our database so it can then retrieve the correct files for the vehicle download.

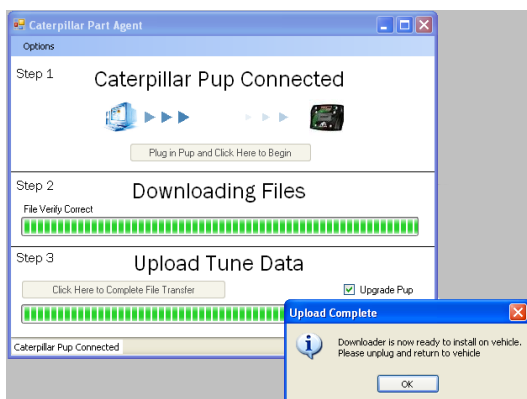


3. In the final step the CAT Update Agent will download the correct vehicle files from our data base and automatically load the files onto the Power Pup. During this step the Power Pup screen will have a percentage complete indicator on the screen. During this step the CAT Update Agent will also upgrade the Power Pup to the latest version if a newer version is available.



If this box is checked it means that the latest software version for the Power Pup is being loaded onto the Power Pup. This box can be manually checked and unchecked.

As soon as the correct vehicle files are loaded onto the Caterpillar Power Pup a dialog box will indicate that the upload is complete and the Power Pup screen will also indicate that the Power Pup is now ready for phase 3 which is reconnecting the Power Pup to the Truck and installing the download.

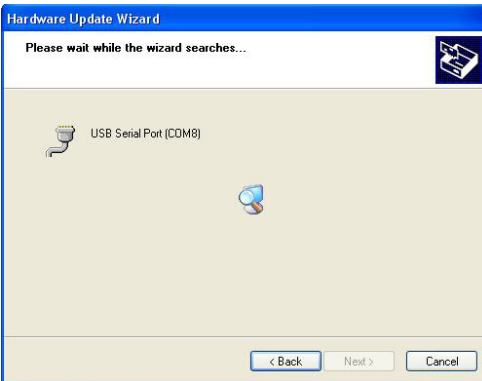


FOUND NEW HARDWARE

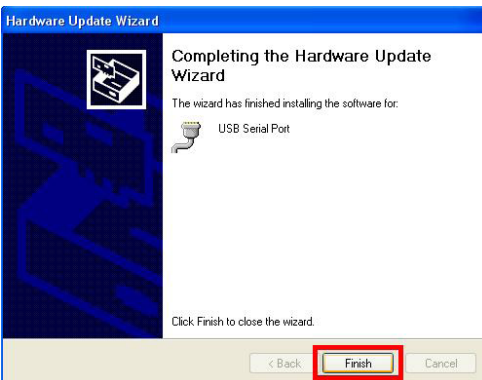
When a Bully Dog device is plugged in for the first time the PC will ask for device drivers. Follow the instructions below for instructions on how to install the device drivers.



1. When the found new hardware wizard appears select Install the software automatically (Recommended) and then click on next.



2. Allow the wizard to search for new hardware.



3. When it is complete click on Finish. Once this step is complete return to the previous page for instructions on updating the Power Pup using the CAT Update Agent.

UNLEASH THE POWER

WITH BULLY DOG PERFORMANCE PRODUCTS

Downloaders



Intake Systems



Custom Mounting Pods



Exhaust Systems



See More at: www.bullydog.com

Doc.# BD46520-98 v1.0.0



BULLY DOG

For Free Technical Support

Call: 866-bullydog (866-285-5936)